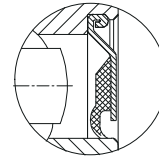
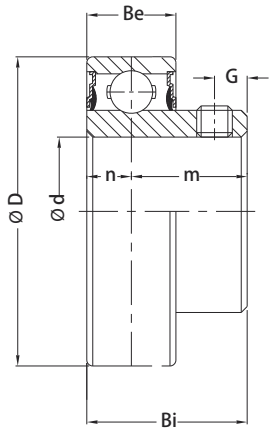


外球面轴承

insert bearing





NPP SEAL

CSB200

轴径 (d)

(min.) | (mm)

轴承型号

外形尺寸 (mm)

D | Bi | n | m | Be | G

止动螺钉规格

(mm)
(UNF)

载荷 (Kgf)

Cr | Cor

重量

轴径 (d)	轴承型号	D	Bi	n	m	Be	G	止动螺钉规格	Cr	Cor	重量
1/2	CSB 201	40,0	22,0	6,0	16,0	12,0	4,0	M5x0,8 1/4-28	970	490	0,10
15	CSB 201-8										
5/8	CSB 202										
17	CSB 202-10 CSB 203 CSB 203-11										
3/4	CSB 204-12 CSB 204	47,0	25,0	7,0	18,0	14,0	5,0	M6x1 1/4-28	1310	680	0,15
7/8	CSB 205-14	52,0	27,0	7,5	19,5	15,0	5,5	M6x1 1/4-28	1430	800	0,20
15/16	CSB 205-15										
1	CSB 205 CSB 205-16										
1-1/8	CSB 206-18	62,0	30,0	9,0	21,0	18,0	6,0	M6x1 1/4-28	2000	1140	0,20
1-3/16	CSB 206										
1-1/4	CSB 206-19 CSB 206-20										
1-1/4	CSB 207-20	72,0	34,9	9,5	25,4	19,0	6,0	M6x1 1/4-28	2640	1550	0,40
1-5/16	CSB 207-21										
1-3/8	CSB 207-22										
35	CSB 207										
1-7/16	CSB 207-23 CSB 207-400C										
1-1/2	CSB 208-24	80,0	39,4	10,5	28,9	21,0	7,0	M8x1 5/16-24	2990	1860	0,50
1-9/16	CSB 208-25										
40	CSB 208										
1-5/8	CSB 209-26	85,0	41,5	11,0	30,5	22,0	8,0	M8x1 5/16-24	3350	2120	0,68
1-11/16	CSB 209-27										
1-3/4	CSB 209-28 CSB 209										
45											
1-7/8	CSB 210-30	90,0	43,0	11,0	32,0	22,0	9,0	M10x1,25 3/8-24	3600	2370	0,80
1-15/16	CSB 210-31										
50	CSB 210										
2	CSB 211-32	100,0	45,0	13,0	32,0	24,0	9,0	M10x1,25 3/8-24	4400	2980	1,00
2-1/8	CSB 211-34										
2-3/16	CSB 211										
55	CSB 211-35										
2-1/4	CSB 212-36	110,0	47,0	13,0	34,0	24,0	10,0	M10x1,25 3/8-24	5350	3350	1,30
2-7/16	CSB 212										
60	CSB 212 -39										